

Who should attend:

Anyone working in and around confined spaces.

Fire Department personnel who have the potential to respond to emergencies in a confined space.

Other first responders who have the potential to respond to emergencies in a confined space.

There are NO pre-requisites for this class.

Students will:

Learn how to identify and classify confined spaces.

Grasp why air monitoring is needed, and how to monitor.

Understand the roles of Supervisor, Attendant, and Entrant in a confined space entry team

Be qualified to operate as part of a confined space entry team.

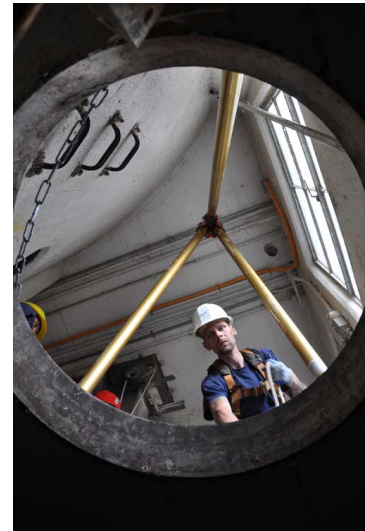
Actively participate as part of a confined space entry team performing the roles of Supervisor, Attendant and Entrant

Learn non-entry and entry retrieval of an incapacitated worker.

Class Length & Structure

8 hours of training time (scheduled over a 9 hour period)

- 1 ½ hrs. Interactive Classroom Presentation and hands on activities.
- 2 ½ hrs. Hands-on Exercises
- 1 hr. Lunch Break
- 4 hrs. Hands-on Exercises



Standards This Class Meets

OSHA:

1910.146

Confined Space Standard

1910.147

Lock out, Tag out Standard

1910.38

Emergency Action Plans

NFPA:

1670

Rescue Teams

1006

Technical Rescuer

Qualifications

ANSI:

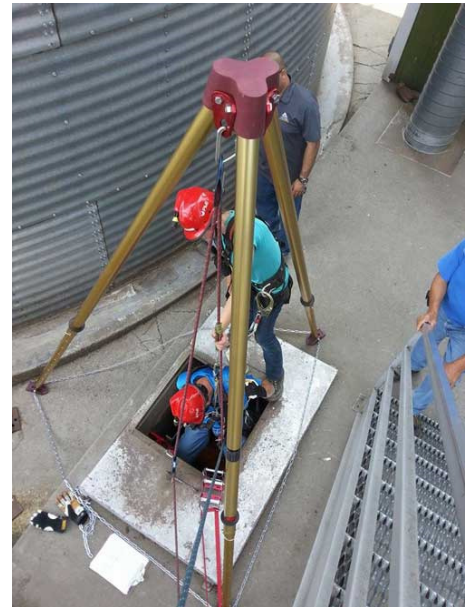
Z359

Fall Protection Code

Topics Covered

Classroom materials are presented through lecture, Power Point presentation and hands on activities. A strong emphasis is placed on safe work practices.

- Confined space entry procedures
- OSHA regulations relating to confined spaces
- Lock out, tag out procedures
- The need for rescue services when making confined space entry
- Detecting and mitigation atmospheric hazards
- Other hazards inside a confined space
- Training requirements
- Air monitoring
- Communications during entries
- Equipment needed for entry and retrieval
- Fall protection, fall prevention and the difference between them
- Harnesses and their use and care
- Assembly and use of an entry life line
- Roles of an Entrant
- Roles of an Attendant
- Roles of a Supervisor
- Non-Entry retrieval of an incapacity worker
- Entry and retrieval of an incapacity worker
- Patient handling



Hands-On Exercises

These exercises put into play all the safety practices taught during the classroom session. They are designed to be as real life as possible. Use of confined spaces on your site gives the students a sense of actual conditions and challenges they could encounter.

Confined space entry / rescue scenarios

These exercises uses a variety of confined space at your facility.

Students fill the roles of a confined space entry team: Supervisor, Attendant, Entrant, and victim.

They practice the use of proper equipment, complete an entry permit, monitor the space for hazards, make entry and rescue an incapacitated worker.

The scenario is repeated several time utilizing various spaces to add a degree of complexity and technical difficulty with each evolution.

Components taught during hands-on exercises:

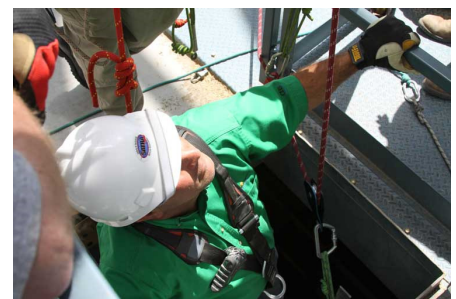
- Harness use & inspection
- Tripod rigging
- Raising and lowering of entrants
- Atmospheric monitoring
- Hazard recognition
- Lock out, tag out
- Communications
- Patient handling



Certification

Upon successful completion of this course students receive certification.

Annual recertification is required.





Confined Space Awareness & Operation Course Overview

www.satrapros.com

(313) 415-4658

Equipment / Supplies Needed

DO NOT purchase new equipment in preparation for training.

Information provided during training will allow you to make informed purchasing decisions, get hands-on time with the products you are considering, and get the most from your equipment budget.

Students:

- Any protective clothing or equipment that is normally required by the facility being used for hands-on exercises.
- If the facility does not dictate protective equipment, we suggest clothing that covers your legs and work boots. Unless dictated by the facility work boots do not need to be steel reinforced.
- Flashlight- suggested
- Hard hat- suggested
- Gloves- suggested
- Students are encourage to bring their harnesses for evaluation for fit form and function.

NOTE: Firefighters participating in this training DO NOT need their turn out gear.

Facility:

- Classroom space & seating for students. Classroom areas that have electrical power, projector and screen available are preferred, but not necessary.
- Access to a facility with various confined space area to be used for hands on exercises.

Suggested locations: water treatment plants, commercial facility, industrial machine or equipment space

SATRA Provides:

- All classroom materials
- All ropes, harnesses and ancillary equipment for hands-on exercises.
- An appropriate number of instructors to ensure safe practices during the live simulation.



To learn more or
schedule a class
call (313) 415-4658
email bharp@satra.us