



Work & Rescue From Heights For Firefighters - 16 hour Course Overview

www.satrapros.com

(313) 415-4658

This class goes further in depth than the 8 Hour Work & Rescue From Heights class. It offers scenarios with increased technical complexity, patient packaging and stokes basket operations which are not covered in the 8 hour class.

Who should attend:

Fire Department personnel who have the potential to respond to emergencies involving rescue from heights.

First responders who have the potential to respond to emergencies involving rescue from heights.

There are NO pre-requisites for this class.

Students will:

Fulfill the NFPA requirement for heights rescue team

Understand safe practices when effecting a rescue at heights, including fall arrest systems, hazard recognition, patient packaging and patient handling.

Actively participate as part of scenarios involving various rescue from heights situation.

Be certified in Rope Rescue Level 1

Class Length & Structure

16 hours of training time (scheduled over 2- 9 hour days)

- 1 ½ hrs. Interactive Classroom Presentation and Hands-on Activities
- 14 ½ hrs. Hands-on Exercises
- 1 hr. Lunch Break each day



Standards This Class Meets

OSHA:

1910.66 Personal Fall Arrest Systems

1926.502 Fall Protection Systems

1910.38 Emergency Action Plans

NFPA:

1670 Rescue Teams

1006 Technical Rescuer Qualifications

1983 Technical Rescue Equipment

ANSI:

Z359 Fall Protection Code





Work & Rescue From Heights For Firefighters - 16 hour Course Overview

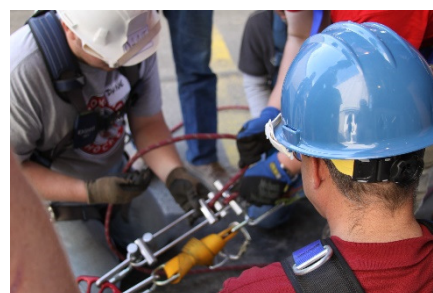
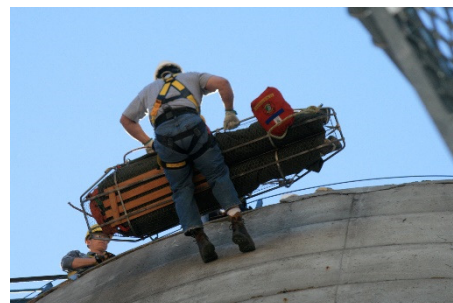
www.satrapros.com

(313) 415-4658

Topics Covered

Classroom materials are presented through lecture, Power Point presentation and hands on activities. A strong emphasis is placed on safe work practices.

- NFPA & OSHA regulations relating to rescue from heights
- Training requirements
- Hazard recognition
- Hazard mitigation
- Fall protection, fall prevention and the difference between them
- Equipment inspection and documentation
- Identifying the components of a personal fall arrest system
- Harnesses and their use and care
- Assembly and use of an entry life line
- Selection of proper anchor points
- Roles of a Competent person
- Roles of a Qualified person
- Roles of an Authorized person
- Patient packaging
- Patient handling
- Stokes basket operations





Work & Rescue From Heights For Firefighters - 16 hour Course Overview

www.satrapros.com

(313) 415-4658

Hands-On Exercises

These exercises put into play all the safety practices taught during the classroom session. They are designed to be as real life as possible. Use of confined spaces on your site gives the students a sense of actual conditions and challenges they could encounter.

Day 1 hands-on scenarios are designed to give students an overview of how to position themselves to effect a rescue

Day 2 hands-on scenarios focus on challenges encountered at specific facilities in your response area. (Examples: water treatment plants, windmills, cell phone towers, radio towers, commercial facilities, industrial facilities, grain storage silos).

Work and rescue from heights scenarios

These exercises uses a variety of space at commercial facility.

Students fill the roles of an incapacitated worker and technical rescue team.

They practice the use of proper equipment, evaluate the space for hazards, and make a rescue from heights of an incapacitated worker.

The scenario is repeated several time utilizing various spaces to add a degree of complexity and technical difficulty with each evolution.

Components taught during hands-on exercises:

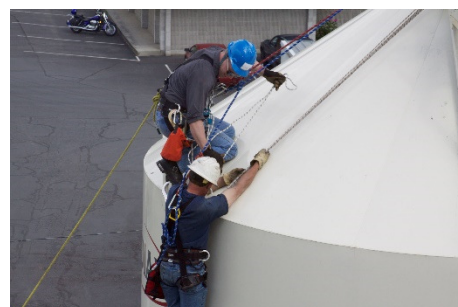
- Equipment use & inspection
- Fall protection assessment
- Fall hazard mitigation
- Appropriate equipment selection
- Communications
- After a fall rescue
- Patient packaging
- Patient handling
- Stokes basket operations



Certification

Upon successful completion of this course students receive certification.

Annual recertification is required.





Work & Rescue From Heights For Firefighters - 16 hour Course Overview

www.satrapros.com

(313) 415-4658

Equipment / Supplies Needed

DO NOT purchase new equipment in preparation for training.

Information provided during training will allow you to make informed purchasing decisions, get hands-on time with the products you are considering, and get the most from your equipment budget.

Students:

- Any protective clothing or equipment that is normally required by the facility being used for hands-on exercises.
- If the facility does not dictate protective equipment, we suggest clothing that covers your legs and work boots. Unless dictated by the facility work boots do not need to be steel reinforced.
- Hard hat / helmet
- Leather gloves
- Eye protection
- Students are encourage to bring their harnesses for evaluation for fit form and function.

NOTE: Firefighters participating in this training DO NOT need their turn out gear.

Facility:

- Classroom space & seating for students. Classroom areas that have electrical power, projector and screen available are preferred, but not necessary.
- Access to a facility with various confined space area to be used for hands on exercises.

Suggested locations: water treatment plants, commercial facility, industrial machine or equipment space

SATRA Provides:

- All classroom materials
- All ropes, harnesses and ancillary equipment for hands-on exercises.
- An appropriate number of instructors to ensure safe practices during the live simulation.



To learn more or
schedule a class
call (313) 415-4658
email bharp@satra.us